

## **SOUTH with AMPEFY and beach stay in IFATY** **(15 days / 14 nights)**

***A new version of the southern tour, starting with a visit of Ampefy and the Geysirs of Analavory. Then drive to the South with visits of the Ranomafana and Isalo National park and the Anja reserve. In Tulear visit of the Arboretum and then shuttle transfer to Ifaty. Beach stay with optional visit of the Reniala reserve, watersports etc.. Flight back to Tana.***

### **1st day: EUROPE - ANTANANARIVO**

Meeting at Ivato international airport and transfer to the hotel. Overnight at the hotel

### **2nd day: ANTANANARIVO – AMPEFY (125 Km about 2,5 hours drive)**

Drive through the highland towards the west. Stop for visiting the lemurs park where some 9 species of lemurs can jump around freely within 5 ha big park. In a small village, you can see how many families manufacture from used beer cans and other recycled materials miniature vehicles which will be exported worldwide. Continue through the volcanic area and arrive in Ampefy, overnight near the Kavitaha lake at the hotel.

### **3rd day: AMPEFY - ANALAVORY**

Visit of the surroundings and the waterfalls of the Lily river. Visit of the Geysirs of Analavory in a nice volcanic landscape. Overnight at the same hotel.

### **4th day: AMPEFY – ANTSIRABE (295 Km about 6 hours drive)**

Drive through one of the coldest mountainous areas of Madagascar over the newly renovated road through Soavinandriana until Faratsiho, then on a dirt track to Sambaina, where you'll join the national road no. 7, and then continue to Antsirabe. In this area, there are many rice paddies, mostly in terraces on the slopes of the hills. Tour of the "Town of Water" - so called because of its numerous thermal springs and existence of two crater lakes. Visit of a workshop where they make miniatures from recycled materials. Overnight at the hotel.

### **5th day: ANTSIRABE – RANOMAFANA (240 Km about 5,5 hour-drive)**

After breakfast, drive to Ranomafana - a national park of rainforest which is home to various species of lemurs such as the golden bamboo lemurs, brown lemurs, birds, chameleons, frogs. Stop in Ambositra for the visit of some Zafimaniry handicrafts centres: woodcarving. Continuation to Ranomafana. After check-in at the hotel, night walk along the road to see nocturnal species of animals, with some luck you'll see mouse lemurs, chameleons etc. Back to the hotel. Overnight at the hotel

### **6th day: RANOMAFANA - FIANARANTSOA (85 Km about 1,5 hour-drive)**

After breakfast, visit of the some 40'000 hectares big Nationalpark with its lemurs, chameleons, spiders, frogs, varieties of orchids and medicinal plants. Only in 1986 was discovered the golden Bamboo lemurs here, and there are more than 100 species of birds. This walk takes around 3 to 4 hours, and goes mostly on trails, sometimes a bit steep up and down, and sometimes you'll go off the paths and into the forest to spot the lemurs, it's a bit exhausting and requires endurance and agility. After lunch, off to Fianarantsoa - the capital of the Betsileo tribe. Overnight at the hotel

### **7th day: FIANARANTSOA - RANOHIRA (295 Km about 5,5 hour-drive)**

Early departure to Ranohira. Stop in Ambalavao - the commercial centre of the southern Betsileo region, renowned for its folks, arts and crafts – to visit the "Antemoro Paper" factory (not possible on Sundays). This paper is a

**Le Voyageur Tourism Consulting GmbH**  
Reckholdernstrasse 63, CH-8590 Romanshorn Switzerland  
Company registration no. CHE-206.515.717  
Tel: +41 71 460 12 51  
Mobile: +41 78 845 14 29  
Postfinance AG  
Mingerstrasse 20 CH-3030 Bern  
IBAN: CH62 0900 0000 9193 0750 9  
BIC/SWIFT: POFICHBEXXX

**Le Voyageur**  
Lot II I 22 AJ Morarano Alarobia P.O. Box 40 Ambohimananina  
Antananarivo 101, Madagascar  
R.C.: 97 B 481 NIF: 3000073073 Id. Stat.: 79110 11 1997 0 10086  
Tel: +261 20 22 43521  
Bank: BMOI, Ankorondrano, 101 Antananarivo, Madagascar  
Acc. No. 02020500183-32  
IBAN: MG46 0000 4000 0402 0205 0018 332  
BIC: BMOIMGMG

delicate, handmade, flower-decorated paper made of the fibres of a tree called "Avoha". Another stop 12km south of Ambalavao to visit the Anja park, where you can see on a walk of around two, some families of ring-tailed Katta lemurs in their natural surroundings. Arrival in Ranohira, overnight at the hotel.

**8th day : RANOHIRA**

Morning trek inside the Isalo National Park to discover on a walk of around three to five hours on sometimes bumpy tracks, at some parts a bit steep, the massif of Isalo, its ruin like sandstones, canyons, endemic fauna and flora (Lemurs and endemic plants such as Pachypodium , aloes,..) and to swim in its natural pool. Back to the hotel in the afternoon. Overnight at the hotel.

**9th day : RANOHIRA - TULEAR - IFATY IFATY (240 Km about 4 hour-drive + 27 Km about 1,5 hour-drive)**

After breakfast, off to Tuléar along a straight road. The landscape is composed of high bushes, thick gallery forests and some proudly decorated Mahafaly tombs. Visit of the Arboretum with many species of endemic plants, then transfer to Ifaty, a beautiful beach, 27kms from the town, for beach life and sea activities. Overnight at the hotel.

**10th until 13<sup>th</sup> day: IFATY**

Free days on the beach for relaxing, watersports etc.. Or optional visit of the Reniala reserve with some baobabs and other endemic plants, birds etc. Overnights at the hotel.

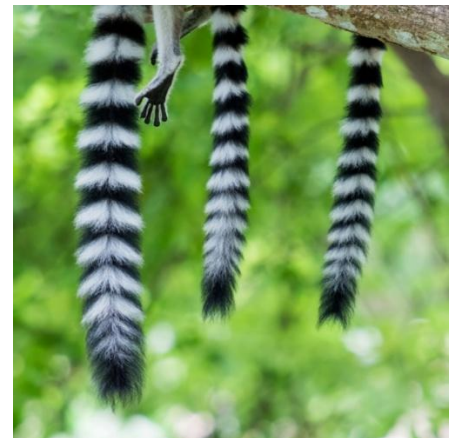
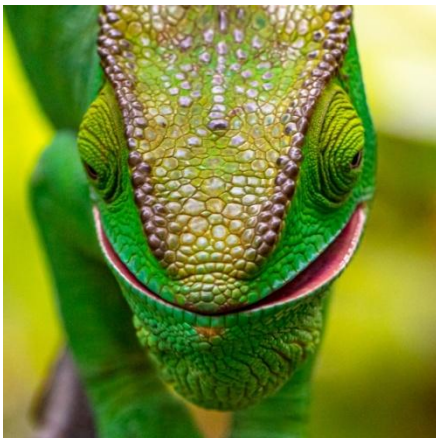
**14<sup>th</sup> day : IFATY – TULEAR – ANTANANARIVO (27 Km about 1,5 hour-drive)**

Back to Tuléar and transfer to the airport for the flight to Tana. Meet at the airport and transfer to the hotel, night at the hotel.

**15th day: ANTANANARIVO – EUROPE**

A day excursion to Ambohimanga – a King's palace built on the top of the hill covered with forests, Then visit of a handicraft market. At the end of the afternoon, day use at the hotel, then transfer to the airport for the flight back to Europe.

**END OF SERVICE**



**TARIFFS PER PERSON:**

**1 person**

SINGLE: 3590 Euro

**2-3 people:**

DOUBLE: 1945 Euro

**4-5 people:**

DOUBLE: 1495 Euro

**6-7 people:**

DOUBLE: 1335 Euro

SINGLE ROOM SUPPLEMENT: 585 Euro

**Including:**

- All airport transfers
- Midrange accommodation based on bed and breakfast
- Parks and reserve fees (Ranomafana, Anja, Ranohira, Arboretum)
- Service of local guides in parks and reserves
- car or bus rental with a driver for the road trip
- Fuel and driver's indemnities
- transfer by the hotel owned 4WD car from Toliara to Ifaty and back
- visit of Ambohimanga and the handcrafts market
- tourist levy and VAT

**Excluding:**

- Domestic flights with airport taxes: Tuléar -Antananarivo: approx. 180 to 270 Euro per person, depending on booking class and season
- Visa fees (35 € for stay up to 30 days)
- International flights and their taxes
- All other meals and drinks
- Excursions and water sports in Ifaty
- Personal expenditures
- Personal insurance for eventualities like accidents, theft or damage to luggage, cancellation etc

Supplement for guide from the agency until Tulear 690 Euro (to be shared by participants)

**Supplement for best hotels:**

SINGLE: 1040 Euro

DOUBLE: 605 Euro/person

**Supplement in best hotels for:**

Half board: 230 Euro

Full board: 460 Euro

**Planned hotels for this tour (subject to availability, other hotels are possible, tariff may have to be adjusted):**

**Name of city / Standard hotel / best hotel**

Antananarivo /Lapasoa\*\* / Hotel du Louvre\*\*\*superior room

Ampefy / Kavitaha\*\* / Eucalyptus\*\*\*

Antsirabe / Chambres du voyageur\*\* / Royal Palace\*\*\*

Ranomafana / Centr'est\*\* / Setam Lodge\*\*\* (Setam lodge on half board base compulsory)

Fianarantsoa / Villa Sylvestre\*\* / Zomatel\*\*\* new wing

Ranohira / Isalo Ranch\*\* / Isalo Rock Lodge\*\*\*\* on half board

Ifaty / La mira\*\*\* /Dunes Beach villa\*\*\*

Antananarivo /Lapasoa\*\* / Hotel du Louvre\*\*\*superior room

**Attention!**

Tariffs are subject to changes, especially if heavy fluctuation in exchange rate and/or fuel prices. All tours and tariffs are subject to changes in case of cancellations or overbooking of flights, changes in timetable, bad weather and road conditions, strike, political troubles, problems with fuel supply, tribal and other war, closing of sites, natural disasters such as earthquakes, cyclones, floods and other acts of God.