

## **EAST (9 days / 8 nights)**

***A tour to the rainy east, with a visit of the Perinet Nationalpark, then along the Pangalanes canal, at the end relaxing on Sainte Marie island. Extension on Sainte Marie possible.***

### **1st day: EUROPE – ANTANANARIVO**

Meeting at Ivato international airport and transfer to the hotel. Overnight at the hotel

### **2nd day: ANTANANARIVO – ANDASIBE (140 Km about 3 hour –drive)**

Drive to Andasibe through a landscape composed of rice paddies, waterfalls, and scarce forest stations. On the way visit of the Marozevo exotic park to see chameleons, butterflies etc. Continue to Andasibe. Before dinner, off for a night walk along the road to see some nocturnal species of animals, with some luck you'll see woolly and mouse lemurs, chameleons etc. Back to the hotel. Overnight at the hotel

### **3rd day: ANDASIBE – MANAMBATO - AKANIN' NY NOFY (132 Km about 4 hour –drive, boat trip 1,5 hours)**

After breakfast , visit of the reserve on a walk which takes around three hours, first a bit up, then mostly flat. Discover the species dwelling inside this forest like Indri Indri, the largest species of lemurs, other species of lemurs, birds etc. . Drive to Manambato, then continuation by motor boat shuttle transfer to Akanin' ny Nofy (literally means "Nest of Dreams"). Overnight at the hotel

### **4th day: AKANIN' NY NOFY**

A full day to discover this beautiful area at the clear and calm waters of the Ampitabe lake and the private Palmarium park with a big variety of lemurs on one spot. You can do a walk of several hours, on small trails, a little bit up and down, but not steep. When night falls, excursion by boat to spot the Aye Aye lemur, with its long middle finger (*Daubentonia madagascariensis*). Overnight at the hotel.

### **5th day: AKANIN'NY NOFY – TAMATAVE (boat trip about 3 hours) - SAINTE MARIE (flights only once or twice /week)**

Transfer by shuttle motor boat along the Pangalanes canal until Tamatave (if flight to Sainte Marie should be early morning, this boat transfer has to happen the evening before). Pick up at the port and transfer to the airport for the flight to Sainte Marie. Meeting at the airport and transfer to the hotel. Overnight at the hotel. Alternatively, the transfer to Sainte Marie could also be done by shuttle bus to Soanierana Ivongo and then by boat to Sainte Marie ( subject to weather conditions).

### **6th day & 7th day : SAINTE - MARIE**

Days free. Option: an excursion to "Ile aux Nattes" aboard a motor boat , visit of pirates cemetery and a lagoon , snorkelling , diving,.. From July to September, humpback whales can be seen near the island. Stay at the hotel

### **8th day: SAINTE MARIE - ANTANANARIVO**

Transfer to the airport for the flight to Antananarivo. Pick up at the airport and transfer to the city. Overnight at the hotel

### **9th day: ANTANANARIVO - EUROPE**

In the morning, excursion to Ambohimanga – a King's palace, 21km north of the city (UNESCO World heritage site).

---

**Le Voyageur Tourism Consulting GmbH**  
Reckholdernstrasse 63, CH-8590 Romanshorn Switzerland  
Company registration no. CHE-206.515.717  
Tel: +41 71 460 12 51  
Mobile: +41 78 845 14 29  
Postfinance AG  
Mingerstrasse 20 CH-3030 Bern  
IBAN: CH62 0900 0000 9193 0750 9  
BIC/SWIFT: POFICHBEXXX

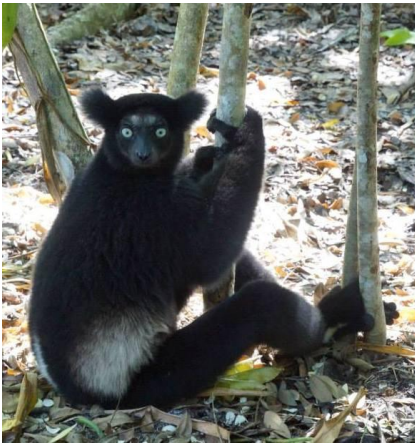
---

**Le Voyageur**  
Lot II 22 AJ Morarano Alarobia P.O. Box 40 Ambohimananina  
Antananarivo 101, Madagascar  
R.C.: 97 B 481 NIF: 3000073073 Id. Stat.: 79110 11 1997 0 10086  
Tel: +261 20 22 43521  
Bank: BMOI, Ankorondrano, 101 Antananarivo, Madagascar  
Acc. No. 02020500183-32  
IBAN: MG46 0000 4000 0402 0205 0018 332  
BIC: BMOIMGMG

---

In the afternoon visit of the handicrafts market to buy some souvenirs. Day use at a hotel. Then transfer to the airport for the flight back to Europe.

## END OF SERVICE



### **TARIFFS PER PERSON:**

**1 person:**

SINGLE: 1915 Euro

**2-3 people:**

DOUBLE: 1060 Euro

**4-5 people:**

DOUBLE: 880 Euro

**6-7 people:**

DOUBLE: 825 Euro

SINGLE ROOM SUPPLEMENT: 275 Euro

**Including:**

- Transfers to and from airport
- Accommodation based on bed and breakfast in midrange hotels, half board on Sainte Marie
- Transfer in the hotel-owned motor boat (there may be other passengers on board): Manambato- Akanin'ny Nofy - Tamatave
- Car with a driver from Antananarivo to Manambato
- Driver's indemnities and Fuel
- Entrance ticket in Andasibe reserve and private park of Palmarium
- Excursion to spot the Aye Aye (if staying at Palmarium Hotel)
- Service of local guide in Andasibe
- Visit of the handicraft market and the historical site of Ambohimanga
- Tourist levy and VAT

**Excluding:**

- International flights and their airport taxes
- Domestic flights with airport taxes and insurance: Tamatave - Sainte Marie; Sainte Marie – Antananarivo around 360 to 550 Euro per person depending on the booking class and season
- Visa fee (35 € for stay up to 30 days)
- all other meals and drinks

- water sports and excursions on Sainte Marie
- Personal expenditures
- Personal insurance for eventualities like accidents, theft or damage to luggage, cancellation etc

Supplement for guide escort from the agency until Tamatave, to be shared by participants: 540 Euro

**Supplement for best hotels:**

DOUBLE: 665 Euro /person

SINGLE: 1225 Euro /person

**Supplement in best hotels for:**

Half board: 105 Euro

Full board: 280 Euro

**Planned hotels for this tour (subject to availability, other hotels are possible, tariff may have to be adjusted):**

**Name of city / Standard hotel / best hotel**

Antananarivo /Lapasoa\*\* / Tamboho Hotel\*\*\*

Andasibe / Grace Lodge\*\* / Vakona Forest Lodge\*\*\*

Akanin'ny Nofy / Palmarium\*\* / unchanged

Sainte Marie / Lakana\*\* / Princesse Bora Lodge\*\*\*sup. luxury villa (in both hotels half board compulsory)

Antananarivo /Lapasoa\*\* / Tamboho Hotel \*\*\*

**Attention!**

Tariffs are subject to changes, especially if heavy fluctuation in exchange rate and/or fuel prices. All tours and tariffs are subject to changes in case of cancellations or overbooking of flights, changes in timetable, bad weather and road conditions, strike, political troubles, problems with fuel supply, tribal and other war, closing of sites, natural disasters such as earthquakes, cyclones, floods and other acts of God.