

## **SOUTH with TAOLAGNARO (15 days/ 14 nights)**

*First a visit of the Andasibe reserve, then classical southern tour with visit of the national parks of Ranomafana and Isalo, then visit of Ifaty with its nice beach and endemic flora. Flight to Ft. Dauphin and visit of the Berenty reserve.*

### **1st day: EUROPE - ANTANANARIVO**

Meeting at the airport and transfer to the hotel. City-sightseeing including a visit of lemur's park where you can see various species of lemurs living freely in a forested area. Overnight at the hotel.

### **2nd day: ANTANANARIVO - ANDASIBE (140 Km about 3 hour –drive)**

Leave after breakfast for Andasibe through a landscape composed by a succession of rice paddies, waterfalls, and scarce forest stations. Stop the visit the reptile park of Marozevo to see many chameleons, some butterflies, frogs etc. Before dinner, off for a night walk along the road to see some nocturnal species of animals, with some luck you can see the woolly and the mouse lemur, chameleons etc. Back to the hotel and Overnight.

### **3rd day : ANDASIBE – ANTANANARIVO (140 Km about 3 hour –drive)**

After breakfast, visit of the reserve on a walk which takes around three hours, first a bit up, then mostly flat. Discover the species dwelling inside this forest like Indri Indri, the tallest of all lemur species, birds, chameleons etc. Back to Antananarivo after lunch.

Overnight at the hotel.

### **4th day: ANTANANARIVO - ANTSIRABE (169 Km about 4 hour-drive)**

Off to Antsirabe after breakfast. Check in at the hotel. In the afternoon, tour of the "Town of Water" or "Town of Rickshaws": so called because of its numerous thermal springs and the existence of two lakes and its thousands of rickshaws. Visit of a workshop where they make miniatures from recycled materials. Overnight at the hotel.

### **5th day : ANTSIRABE – RANOMAFANA (240 Km about 5 hour-drive)**

After breakfast, drive to Ranomafana. Stop in Ambositra for the visit of some Zafimaniry handicrafts centres: woodcarving Continuation to Ranomafana. After check-in at the hotel, night walk along the road to see nocturnal species of animals, with some luck you'll see mouse lemurs, chameleons etc. Back to the hotel and Overnight.

### **6th day: RANOMAFANA - FIANARANTSOA (85 Km about 1,5 hour-drive)**

After breakfast, visit of the some 40'000 hectares big Nationalpark with its lemurs, chameleons, spiders, frogs, varieties of orchids and medicinal plants. Only in 1986 was discovered the golden Bamboo lemurs here, and there are more than 100 species of birds. This walk takes around 3 to 4 hours, and goes mostly on trails, sometimes a bit steep up and down, and sometimes you'll go off the paths and into the forest to spot the lemurs, it's a bit exhausting and requires endurance and agility. After lunch, off to Fianarantsoa - the capital of the Betsileo tribe. Overnight at the hotel

### **7th day: FIANARANTSOA - RANOHIRA (295 Km about 5,5 hour-drive)**

Early departure to Ranohira. Stop in Ambalavao - the commercial centre of the southern Betsileo region, renowned for its folks, arts and crafts – possibility to visit the "Antemoro Paper" workshop (visit not possible on Sundays). This paper is a delicate, handmade, flower-decorated paper made of the fibres of the tree called "Avoha", treated according to an ancient method of the Arabs. Another stop 12km south of Ambalavao to visit the Anja park, where you can see on a walk of around two hours on a little bumpy tracks, but not steep, some families of ring-tailed Katta lemurs in their natural surroundings. Arrival in Ranohira, Overnight at the hotel.

---

#### **Le Voyageur Tourism Consulting GmbH**

Reckholdernstrasse 63, CH-8590 Romanshorn Switzerland  
Company registration no. CHE-206.515.717

Tel: +41 71 460 12 51  
Mobile: +41 78 845 14 29

Postfinance AG

Mingerstrasse 20 CH-3030 Bern

IBAN: CH62 0900 0000 9193 0750 9

BIC/SWIFT: POFICHBEXX

#### **Le Voyageur**

Lot II 22 AJ Morarano Alarobia P.O. Box 40 Ambohimananina  
Antananarivo 101, Madagascar

R.C.: 97 B 481 NIF: 3000073073 Id. Stat.: 79110 11 1997 0 10086  
Tel: +261 20 22 43521

Bank: BMOI, Ankorondrano, 101 Antananarivo, Madagascar

Acc. No. 02020500183-32

IBAN: MG46 0000 4000 0402 0205 0018 332

BIC: BMOIMGMG

**8th day : RANOHIRA**

Morning trek inside the Isalo National Park to discover on a walk of around three to five hours on sometimes bumpy tracks, at some parts a bit steep, the massif of Isalo, its ruin like sandstones, canyons, endemic fauna and flora (Lemurs and endemic plants such as Pachypodium , aloes,..) and to swim in its natural pool. Overnight at the hotel.

**9th day: RANOHIRA - TULEAR – IFATY (240 Km about 4 hour-drive + 27 Km about 1 hour-drive)**

After breakfast, off to Tuléar along a straight road. The landscape is composed of high bushes, thick gallery forests and some proudly decorated Mahafaly tombs. Visit of the Arboretum with many species of endemic plants, then continuation to Ifaty, a beautiful beach, 27kms from the town, for beach life and sea activities. Overnight at the hotel.

**10th day: IFATY**

Free day on the beach or for water sports such as diving, surfing etc. . Or optional visit of the Reniala reserve with some baobabs and other endemic plants, birds etc. Overnight at the hotel.

**11th day: IFATY – TULEAR - FT. DAUPHIN - BERENTY (flights Tulear – Ft Dauphin are not daily, so tour may have to be adapted accordingly) (100 km about 4 hour-drive)**

Back to Tuléar and transfer to the airport for the flight to Fort-dauphin. Meet at the airport and drive directly to Berenty (flight must arrive before 2PM, otherwise a night in Ft. Dauphin will be necessary. See some Alluaudias : spiny plants on the way. Dinner and night at the hotel.

**12th day: BERENTY**

After breakfast, visit of the private reserve of Berenty : a reserve of dry forest and succulent spiny plants which is home to different species of birds (Couas, Vangas, Drongos, Falcons, ...) and of lemurs (Lemur catta, Propithecus, Lemur fulvus, Microcebus, ...). Dinner and night at the hotel.

**13th day: BERENTY - FORT DAUPHIN (100 km about 4 hour-drive)**

Drive back to Fort-Dauphin in the afternoon then. Dinner and night at the hotel.

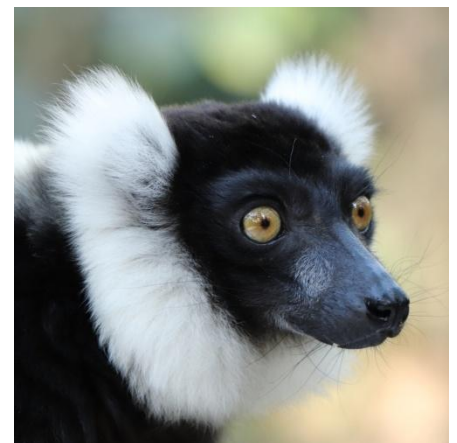
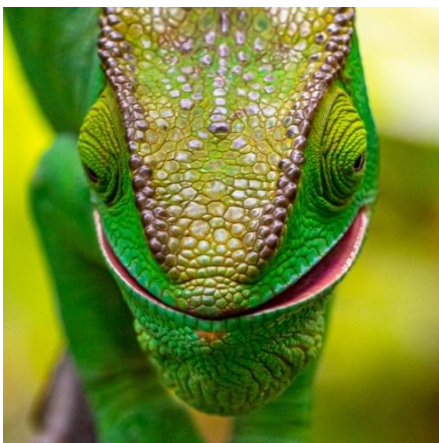
**14th day: FORT DAUPHIN - ANTANANARIVO**

Transfer to the airport and flight to the capital city. Meet at the airport and transfer to the city. Overnight at the hotel.

**15th day: ANTANANARIVO – EUROPE**

A day excursion to Ambohimanga – a King’s palace built on the top of the hill covered with forests, Then visit of a handicraft market. At the end of the afternoon, day use at the hotel, then transfer to the airport for the flight back to Europe

**END OF SERVICE**



**TARIFFS PER PERSON:**

**1 person:**

SINGLE: 4035 Euro

**2-3 people**

DOUBLE: 2245 Euro

SINGLE ROOM SUPPLEMENT: 545 Euro

**4-5 people**

DOUBLE: 1755 Euro

**6-7 people:**

DOUBLE: 1625 Euro

**Including:**

- Accommodation based on bed and breakfast in midrange hotels except in Berenty and Ft. Dauphin: on half board
- Airport transfers
- Car rental with a driver from Antananarivo to Tulear,
- Transfer from Fort Dauphin to Berenty and back
- Park and reserve fees
- Service of park or reserve guides
- Driver's indemnities and Fuel
- tourist levy and VAT

**Excluding:**

- Domestic flights with airport taxes and insurance: Tuléar- Fort Dauphin- Antananarivo, about 360 to 540 Euro per person depending on booking class and season
- International flights with airport taxes
- Visa fee (35 € for a stay up to 30 days)
- All other meals and drinks
- Activities and excursions in Ifaty
- Personal expenditures
- Personal insurance for eventualities like accidents, theft or damage to luggage, cancellation etc

Supplement for English speaking guide of the agency: 1340 Euro (to be shared by participants)

**Supplement for best hotels:**

SINGLE: 615 Euro

DOUBLE: 320 Euro/person

**Supplement in best hotels for:**

Half board: 200 Euro

Full board: 460 Euro

**Planned hotels for this tour (subject to availability, other hotels are possible, tariff may have to be adjusted):**

**Name of city / Standard hotel / best hotel**

Antananarivo /Lapasoa\*\* / Royal Palissandre\*\*\*\* Std room

Andasibe / Sahatandra River\*\* / Vakona Forest Lodge\*\*\*

Antananarivo /Lapasoa\*\* / Royal Palissandre\*\*\*\* Std room

Antsirabe / Chambres du voyageur\*\* / Arotel\*\*\* std room

Ranomafana / Centr'est\*\* / Setam Lodge\*\*\* (Setam lodge on half board base compulsory)

Fianarantsoa / Villa Sylvestre\*\* / Tsara Guest house\*\*\* room with king size bed

Ranohira / Isalo Ranch\*\* / Isalo Rock Lodge\*\*\*\* on half board



Ifaty /La Mira Hotel \*\*\* /Paradisier\*\*\* suite  
Berenty / Berenty Lodge\*\* / unchanged  
Fort Dauphin / Croix du sud\*\*\* room with terrace / unchanged  
Antananarivo /Lapasoa\*\* / Royal Palissandre\*\*\*\* Std room

**Attention!**

Tariffs are subject to changes, especially if heavy fluctuation in exchange rate and/or fuel prices. All tours and tariffs are subject to changes in case of cancellations or overbooking of flights, changes in timetable, bad weather and road conditions, strike, political troubles, problems with fuel supply, tribal and other war, closing of sites, natural disasters such as earthquakes, cyclones, floods and other acts of God.